

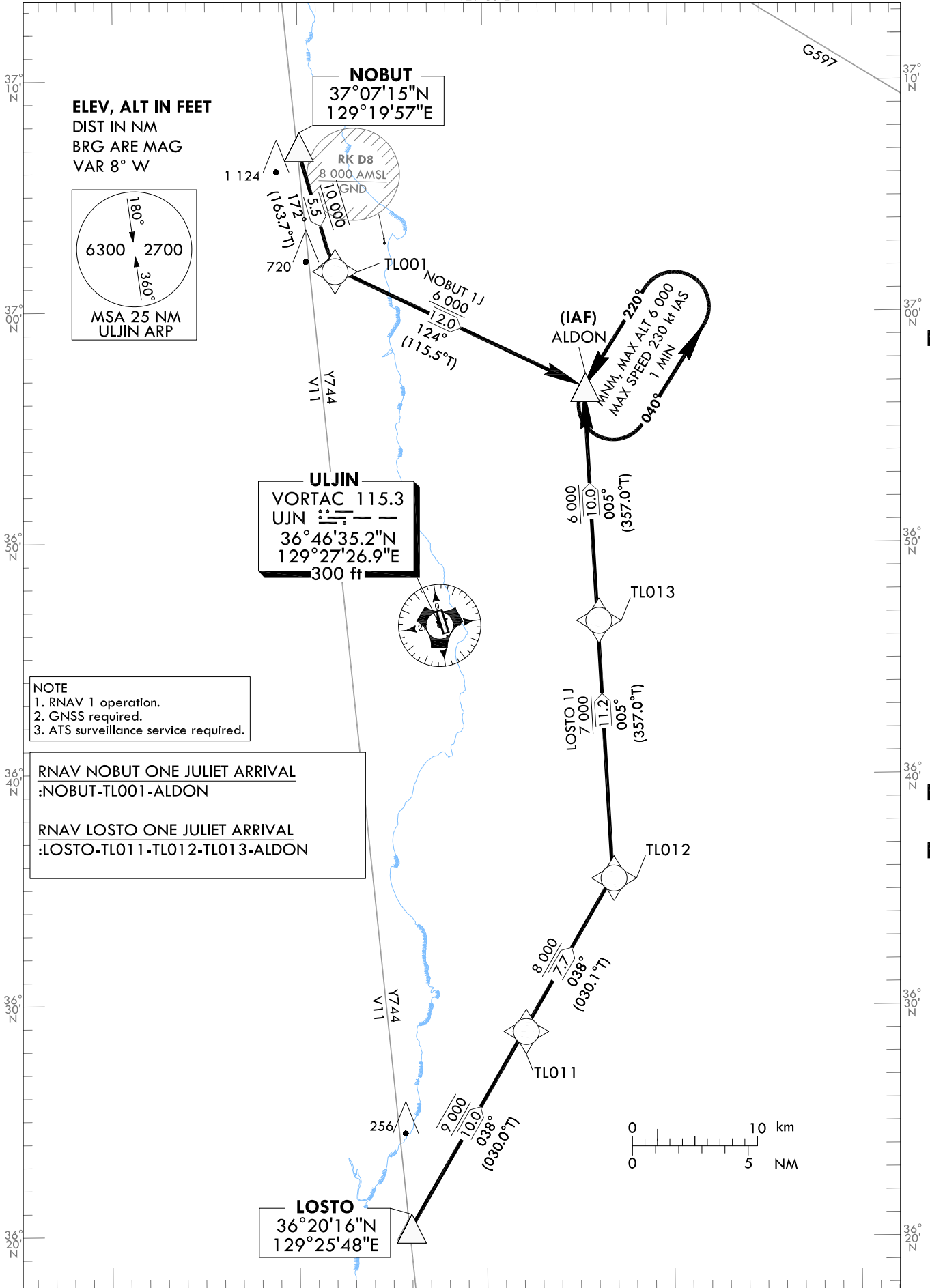
STANDARD ARRIVAL CHART  
INSTRUMENT(STAR) - ICAO

TRANSITION ALT 14 000  
TRANSITION LVL FL 140

ULJIN	ARR	120.875
ULJIN	TWR	118.55
		317.45

ULJIN/ULjin(RKTL)  
RWY 17  
RNAV NOBUT 1J  
RNAV LOSTO 1J

Note : Arrival under ICAO flight Procedures.



NOTE  
1. RNAV 1 operation.  
2. GNSS required.  
3. ATS surveillance service required.

RNAV NOBUT ONE JULIET ARRIVAL  
:NOBUT-TL001-ALDON

RNAV LOSTO ONE JULIET ARRIVAL  
:LOSTO-TL011-TL012-TL013-ALDON

Change : Information of fix name(LENON → ALDON).

ULJIN/Uljin(RKTL)  
RWY 17  
RNAV NOBUT 1J  
RNAV LOSTO 1J

AERONAUTICAL DATA TABULATION

Standard Instrument Arrival Procedure Coding Tables

RNAV NOBUT 1J

Serial Number	Path Descriptor	Waypoint Identifier	Fly-over	Course/Track °M(°T)	Distance (NM)	Turn direction	Altitude (ft)	Speed (kt)	Coordinates	VPA/TCH	Navigation specification	Remarks
001	IF	NOBUT	-	-	-	-	-	-	37°07'15.1"N 129°19'56.6"E	-	RNAV 1	-
002	TF	TL001	-	172(163.7)	5.5	-	@10 000	-	37°01'57.9"N 129°21'52.1"E	-	RNAV 1	-
003	HM	ALDON	-	124(115.5)	12.0	-	+6 000	-	36°56'46.3"N 129°35'23.0"E	-	RNAV 1	IAF

RNAV LOSTO 1J

Serial Number	Path Descriptor	Waypoint Identifier	Fly-over	Course/Track °M(°T)	Distance (NM)	Turn direction	Altitude (ft)	Speed (kt)	Coordinates	VPA/TCH	Navigation specification	Remarks
001	IF	LOSTO	-	-	-	-	-	-	36°20'15.8"N 129°25'48.3"E	-	RNAV 1	-
002	TF	TL011	-	038(030.0)	1.0	-	@9 000	-	36°28'56.0"N 129°32'00.2"E	-	RNAV 1	-
003	TF	TL012	-	038(030.1)	7.7	-	+8 000	-	36°35'34.5"N 129°36'46.2"E	-	RNAV 1	-
004	TF	TL013	-	005(357.0)	11.2	-	+7 000	-	36°46'46.3"N 129°36'02.3"E	-	RNAV 1	-
005	HM	ALDON	-	005(357.0)	10.0	-	+6 000	-	36°56'46.3"N 129°35'23.0"E	-	RNAV 1	-

Change : Information of fix name(LENON → ALDON).

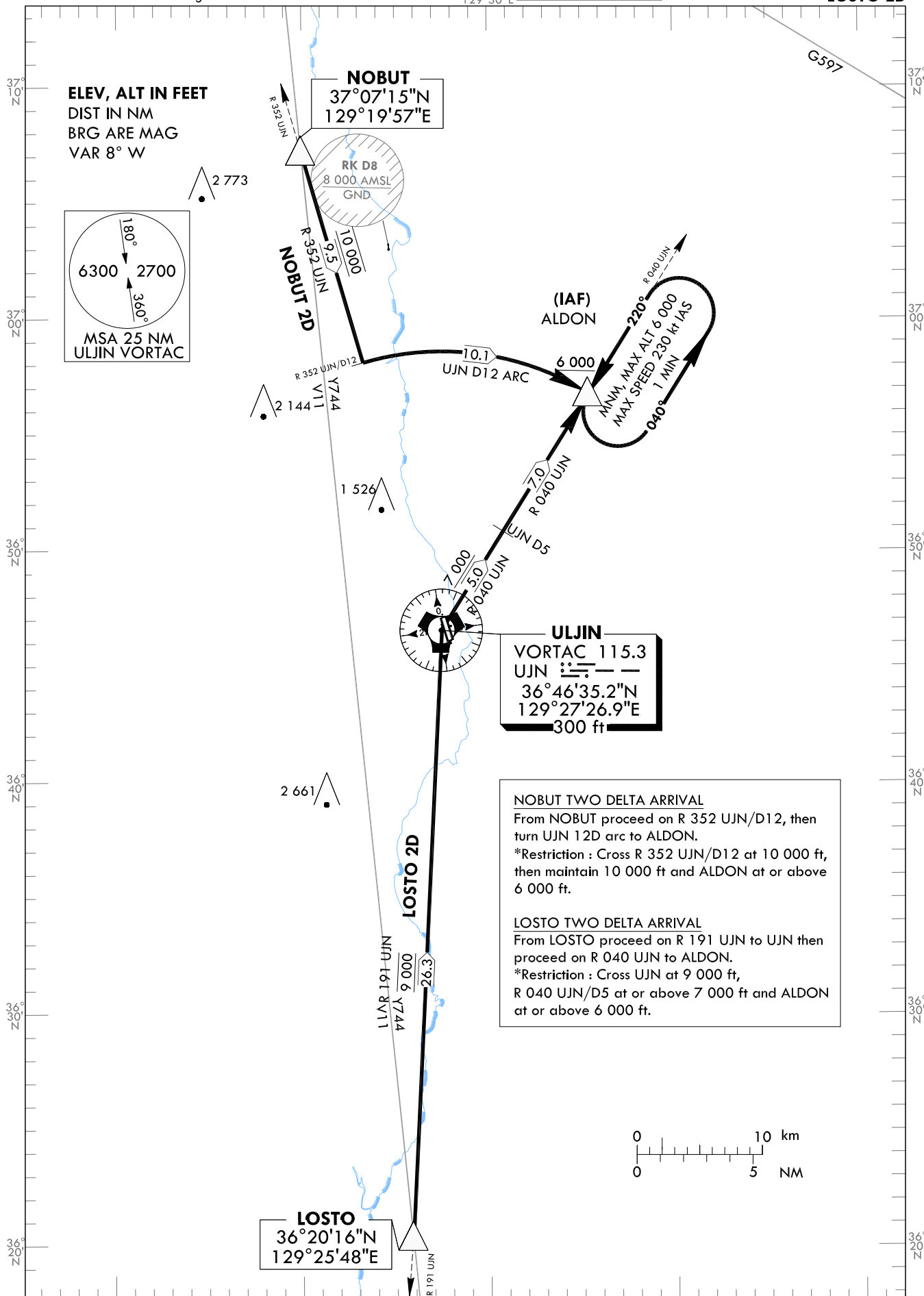
STANDARD ARRIVAL CHART  
INSTRUMENT(STAR) - ICAO

TRANSITION ALT 14 000  
TRANSITION LVL FL 140

ULJIN	ARR	120.875
		317.65
ULJIN	TWR	118.55
		317.45

ULJIN/ULjin(RKTL)  
RWY 17  
NOBUT 2D  
LOSTO 2D

Note : Arrival under ICAO flight Procedures.



Change : Information of fix name(LENON → ALDON).

**INTENTIONALLY**

**LEFT**

**BLANK**

STANDARD ARRIVAL CHART  
INSTRUMENT(STAR) - ICAO

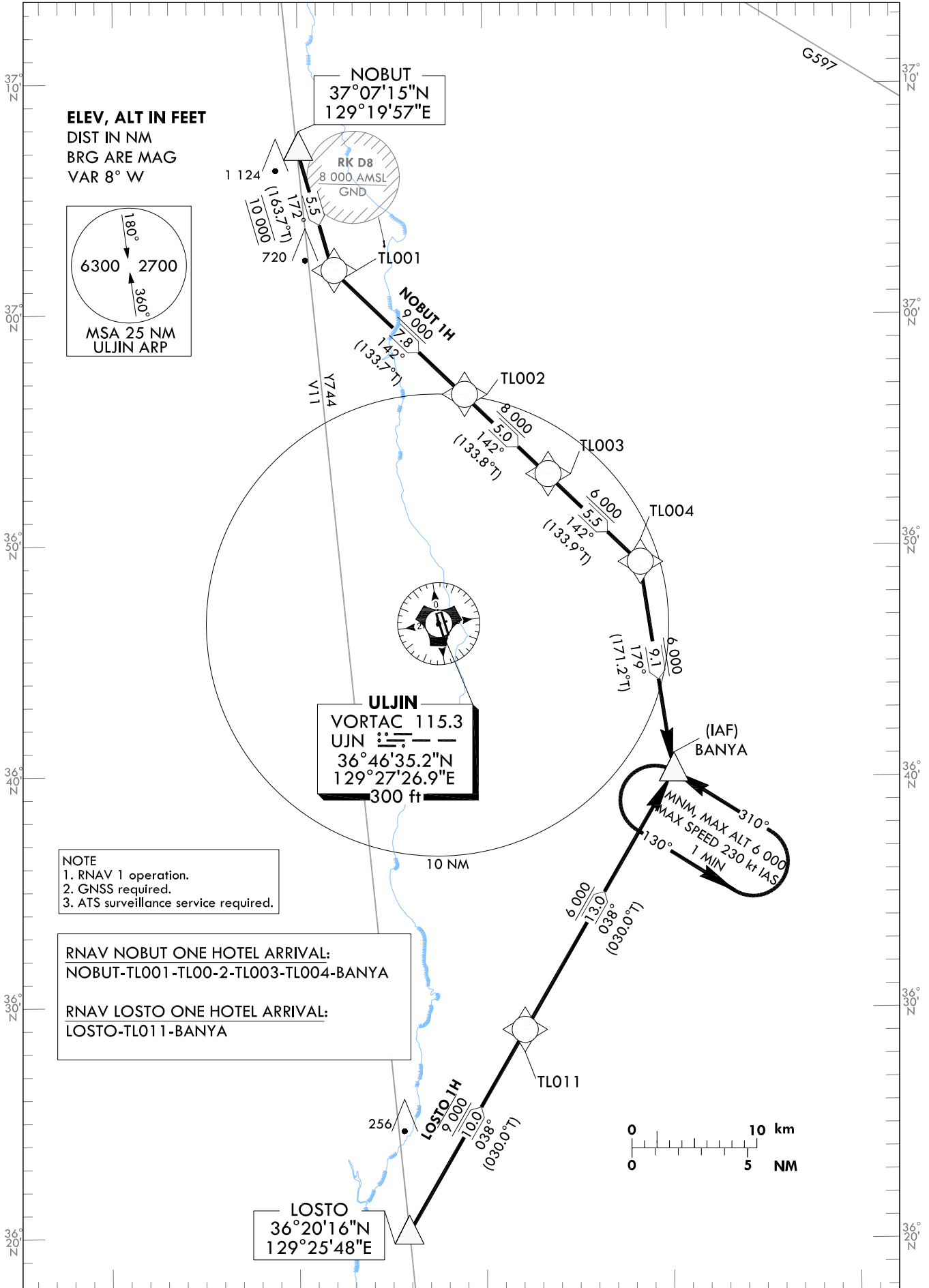
TRANSITION ALT 14 000  
TRANSITION LVL FL 140

ULJIN	ARR	120.875
		317.65
ULJIN	TWR	118.55
		317.45

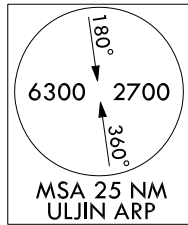
ULJIN/ULjin(RKTL)  
RWY 35  
RNAV NOBUT 1H  
RNAV LOSTO 1H

Note : Arrival under ICAO flight Procedures.

129°30' E



ELEV, ALT IN FEET  
DIST IN NM  
BRG ARE MAG  
VAR 8° W



NOTE  
1. RNAV 1 operation.  
2. GNSS required.  
3. ATS surveillance service required.

RNAV NOBUT ONE HOTEL ARRIVAL:  
NOBUT-TL001-TL002-TL003-TL004-BANYA  
RNAV LOSTO ONE HOTEL ARRIVAL:  
LOSTO-TL011-BANYA

Change : Information of arrival call sign.

129°30' E

129°40' E

AERONAUTICAL DATA TABULATION

Standard Instrument Arrival Procedure Coding Tables

RNAV NOBUT 1H

Serial Number	Path Descriptor	Waypoint Identifier	Fly-over	Course/Track °M(°T)	Distance (NM)	Turn direction	Altitude (ft)	Speed (kt)	Coordinates	VPA/TCH	Navigation specification	Remarks
001	IF	NOBUT	-	-	-	-	-	-	37°07'15.1"N 129°19'56.6"E	-	RNAV 1	-
002	TF	TL001	-	172(163.7)	5.5	-	@10 000	-	37°01'57.9"N 129°21'52.1"E	-	RNAV 1	-
003	TF	TL002	-	142(133.7)	7.8	-	+9 000	-	36°56'33.3"N 129°28'54.3"E	-	RNAV 1	-
004	TF	TL003	-	142(133.8)	5.0	-	+8 000	-	36°53'05.2"N 129°33'24.1"E	-	RNAV 1	-
005	TF	TL004	-	142(133.9)	5.5	-	+6 000	-	36°49'15.2"N 129°38'21.7"E	-	RNAV 1	-
006	HM	BANYA	-	179(171.2)	9.1	-	+6 000	-	36°40'12.4"N 129°40'05.8"E	-	RNAV 1	IAF

RNAV LOSTO 1H

Serial Number	Path Descriptor	Waypoint Identifier	Fly-over	Course/Track °M(°T)	Distance (NM)	Turn direction	Altitude (ft)	Speed (kt)	Coordinates	VPA/TCH	Navigation specification	Remarks
001	IF	LOSTO	-	-	-	-	-	-	36°20'15.8"N 129°25'48.3"E	-	RNAV 1	-
002	TF	TL011	-	038(030.0)	10.0	-	@9 000	-	36°28'56.1"N 129°32'00.1"E	-	RNAV 1	-
003	HM	BANYA	-	038(030.0)	13.0	-	+6 000	-	36°40'12.4"N 129°40'05.8"E	-	RNAV 1	IAF

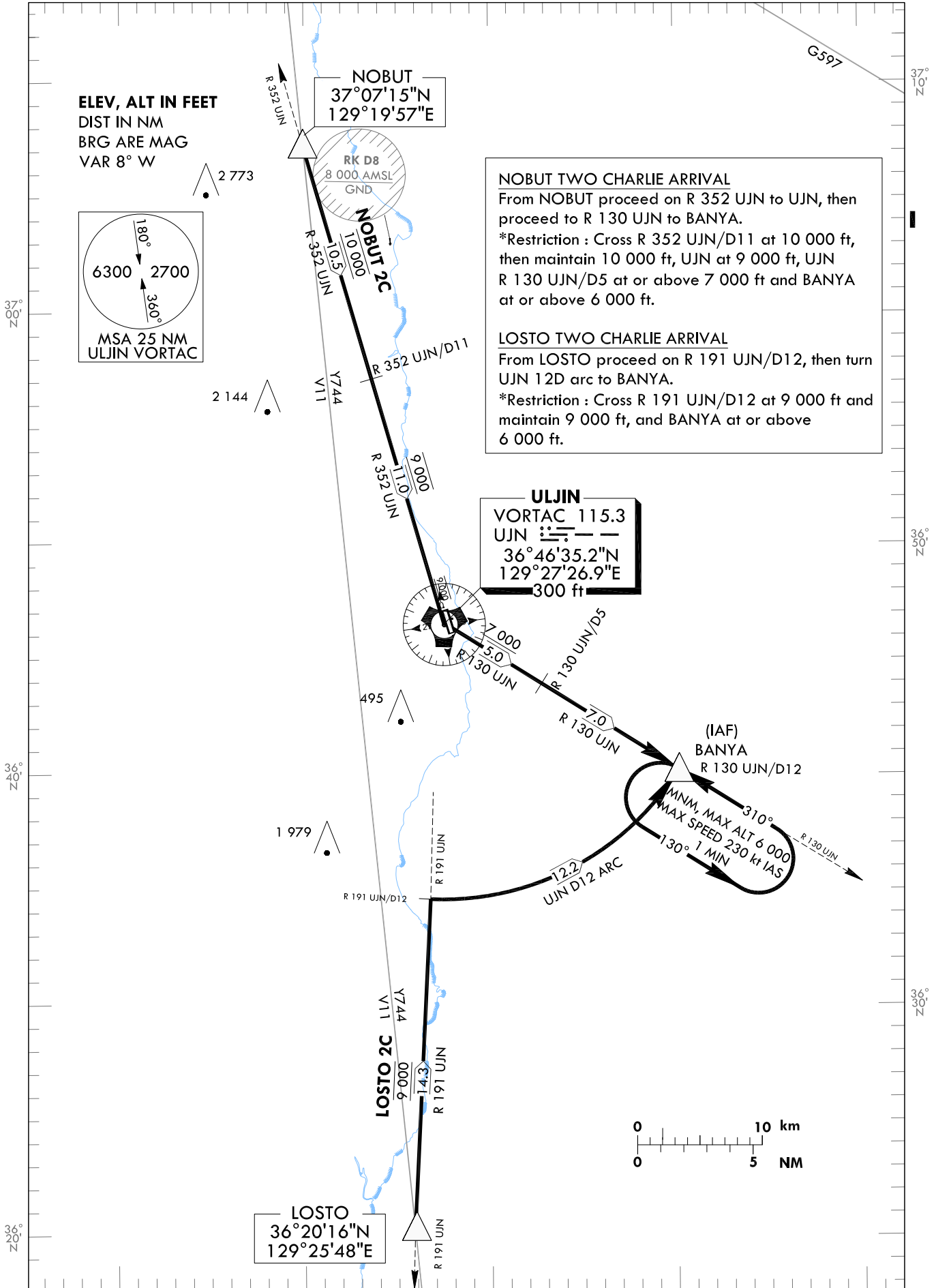
STANDARD ARRIVAL CHART  
INSTRUMENT(STAR) - ICAO

TRANSITION ALT 14 000  
TRANSITION LVL FL 140

ULJIN	ARR	120.875
		317.65
ULJIN	TWR	118.55
		317.45

ULJIN/ULjin(RKTL)  
RWY 35  
NOBUT 2C  
LOSTO 2C

Note : Arrival under ICAO flight Procedures. 129°20'E 129°30'E



Change : Amended phrases(R 010 → R 130).

129°40'E

**INTENTIONALLY**

**LEFT**

**BLANK**